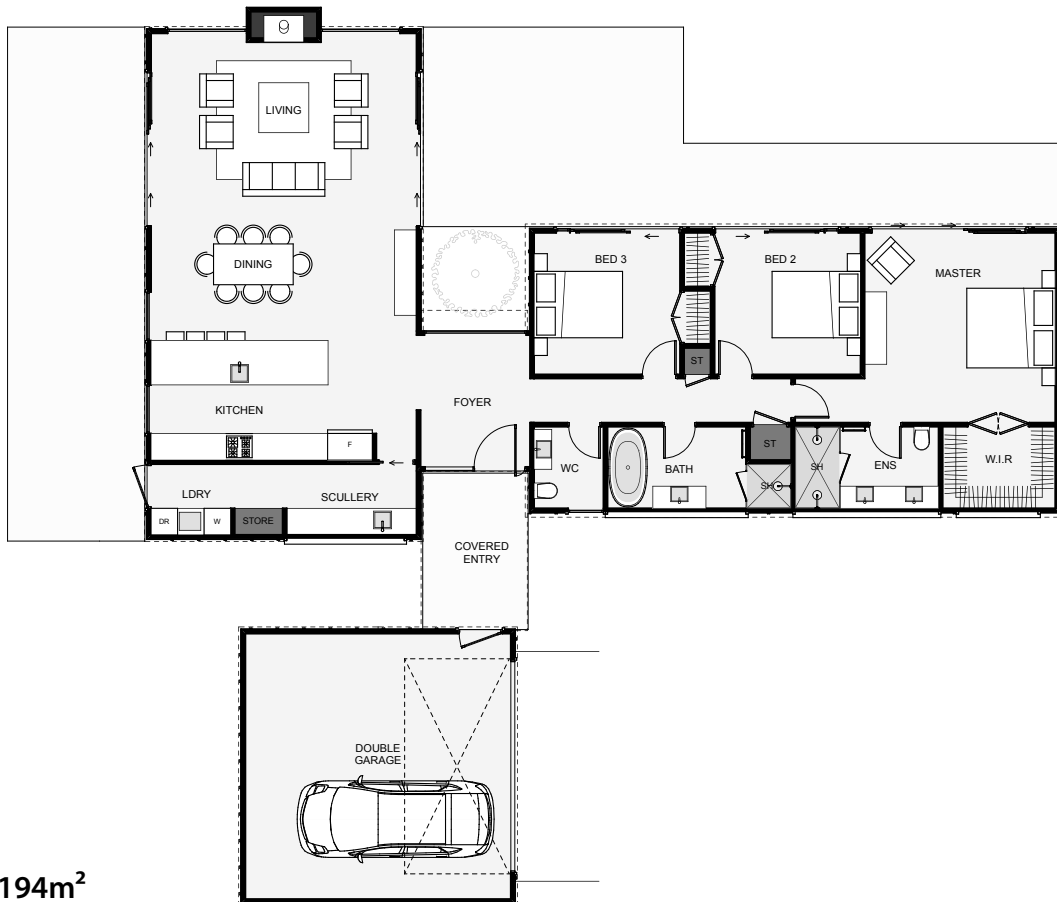




This modern farmhouse breaks the home into three clear pavilions, each housing a different part of the home; Garage, living and bedrooms. This design can work whether your driveway comes in from the east, south or west. Some nice features of this home include the scullery, dual outdoor areas for all day sun, large walk-in wardrobe and ensuite plus a centrepiece chimney, which frames two large gable windows. This is a modern farmhouse, a timeless design, a fine structure you could just be lucky enough to call home!



Floor Area: 194m<sup>2</sup>

 2  
  3  
  2  
  1  
  20.6m  
  20.2m

Contact Glen:

Ph: 0274 626 101

E: [info@glenarmstrongbuilders.co.nz](mailto:info@glenarmstrongbuilders.co.nz)

[www.glenarmstrongbuilders.co.nz](http://www.glenarmstrongbuilders.co.nz)

